

## SB362 A-Pin Change

### Description

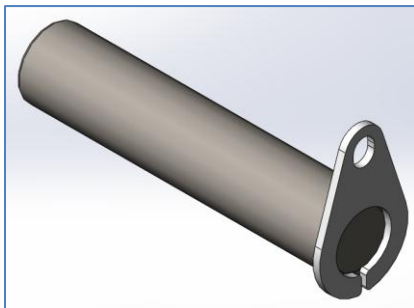
As of September 2013 the A-Pin in all variants of SB362 cranes has been changed

### Models and Markets

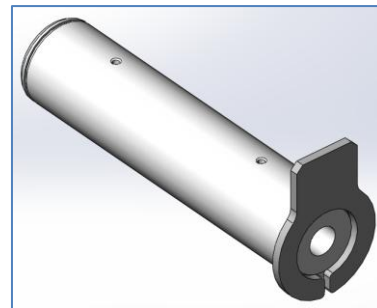
This affects all SB362 cranes in all markets

### Bills of Material

New A-Pin: PN-42801



Old A-Pin: PN-21819



(Note: This pin is still used as the D-pin on all SB362s)

### Backward Compatibility

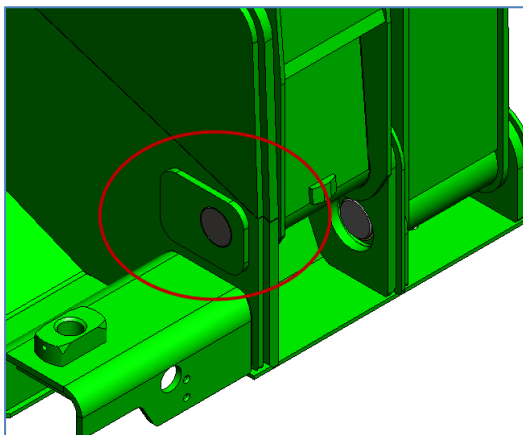
All SB362 cranes are currently in the process of being modified to fit the new A-Pin (and to modify the crane base to suit). The new pin cannot be used on an unmodified crane base and the old pin cannot be used on a modified crane base.

### Use Instructions

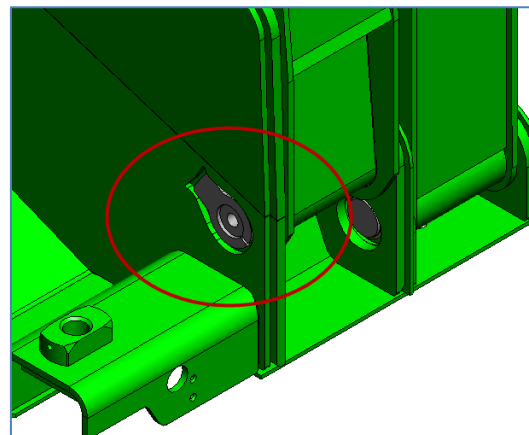
The old pin was fitted from the container side and was retained by a circlip

The new pin is fitted from the stabilizer side and is retained by a shouldered screw

New A-Pin

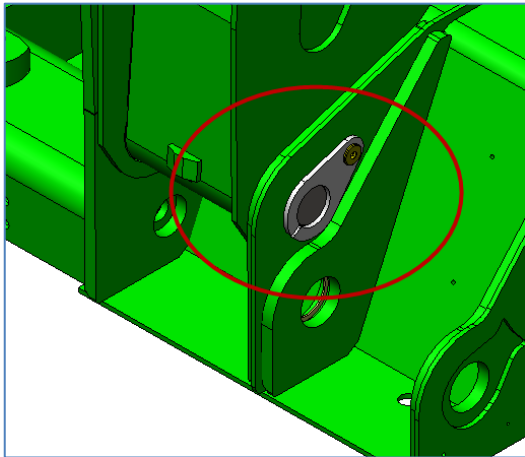


Old A-Pin

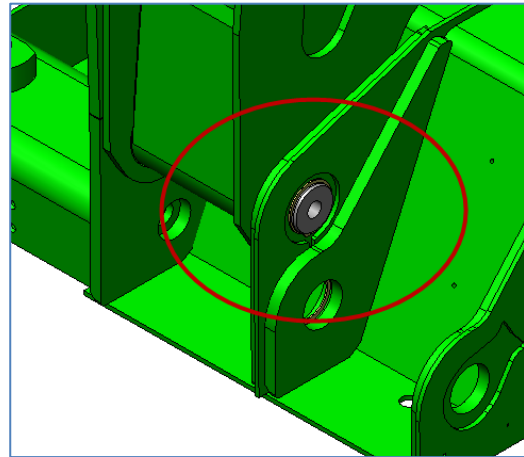


## SB362 A-Pin Change

New A-Pin



Old A-Pin



## Benefits and Advantages to Change

The longer pin gives an increased bearing area in the crane base, thus reducing wear

## References

This change was incorporated on SC-01232